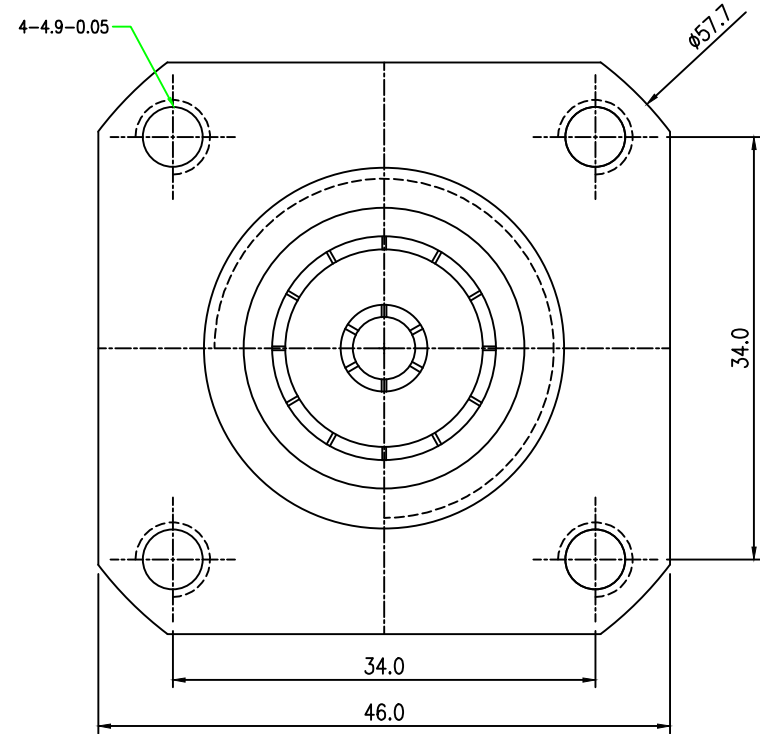
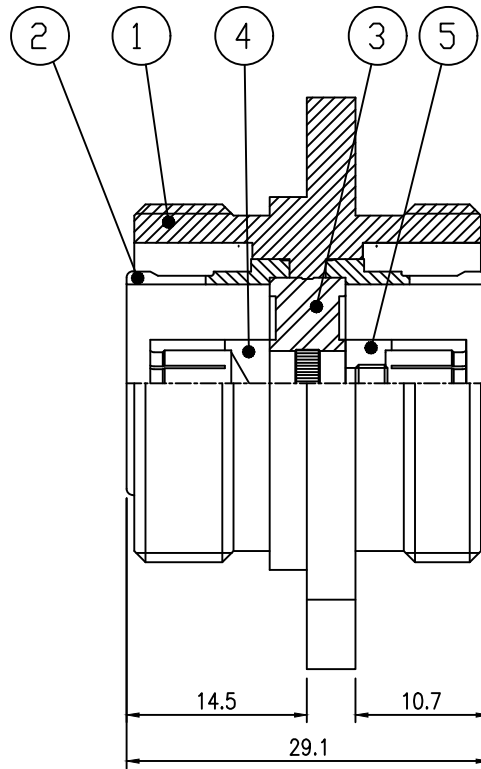


REV	DESCRIPTION	DSG	APR	DATE



NOTE

1. FINISH: SUCO 3.0~6.0 μ m
2. 조립 후 Socket이 6Kgf의 힘에서 돌지 말 것.
3. Socket 높이 1.9 \pm 0.1에 들게 조립 할 것.
4. 삽입력(test pin 5.00) 1~3Kgf, 발거력(test pin 4.96) 0.6Kgf Min의 조건을 충족시킬 것.
5. Go-gauge는 smooth하게 통과하고, No-gauge는 나사산 3산 이상을 통과하지 않을 것.
6. CD 는 중요한 치수와 관리를 요하는 부분을 나타낸다.

5	-	SOCKET	1	KS-D-5102 C1720B	Ag 5.0 Min	
4	-	SOCKET	1	KS-D-5102 C1720B	Ag 5.0 Min	
3	-	INSULATOR	1	ASTM-D-1457 PTFE	-	
2	--	GUIDE	2	KS-D-5101 C3601BD		
1	-	SHELL	1	KS-D-5101 C3604BD	SEE NOTE 1.	
No.	PART No.	PART NAME	Q'TY	MATERIAL	FINISH(μ m)	REMARKS

UNLESS OTHERWISE SPECIFIED : ALL DIMS IN MILLIMETERS TOLERANCES ON DECIMALS 1 PLACE 0.20 2 PLACE 0.10 REMOVE BURRS, BREAK SHARP EDGES				THIRD ANGLE
DRAW	DESIGN	CHECK	APPROD.	
2015.11. 5				2015.11. 5
Material	SEE PART LIST			
Finish	SEE PART LIST			

RFCM		
7/16 JACK 4H CONNECTOR		
SIZE A4	DWG NO. CM-10089	REV A
Scale : NS Do Not Scale Drawing 1 of 1		